

## Canvas How To Guide

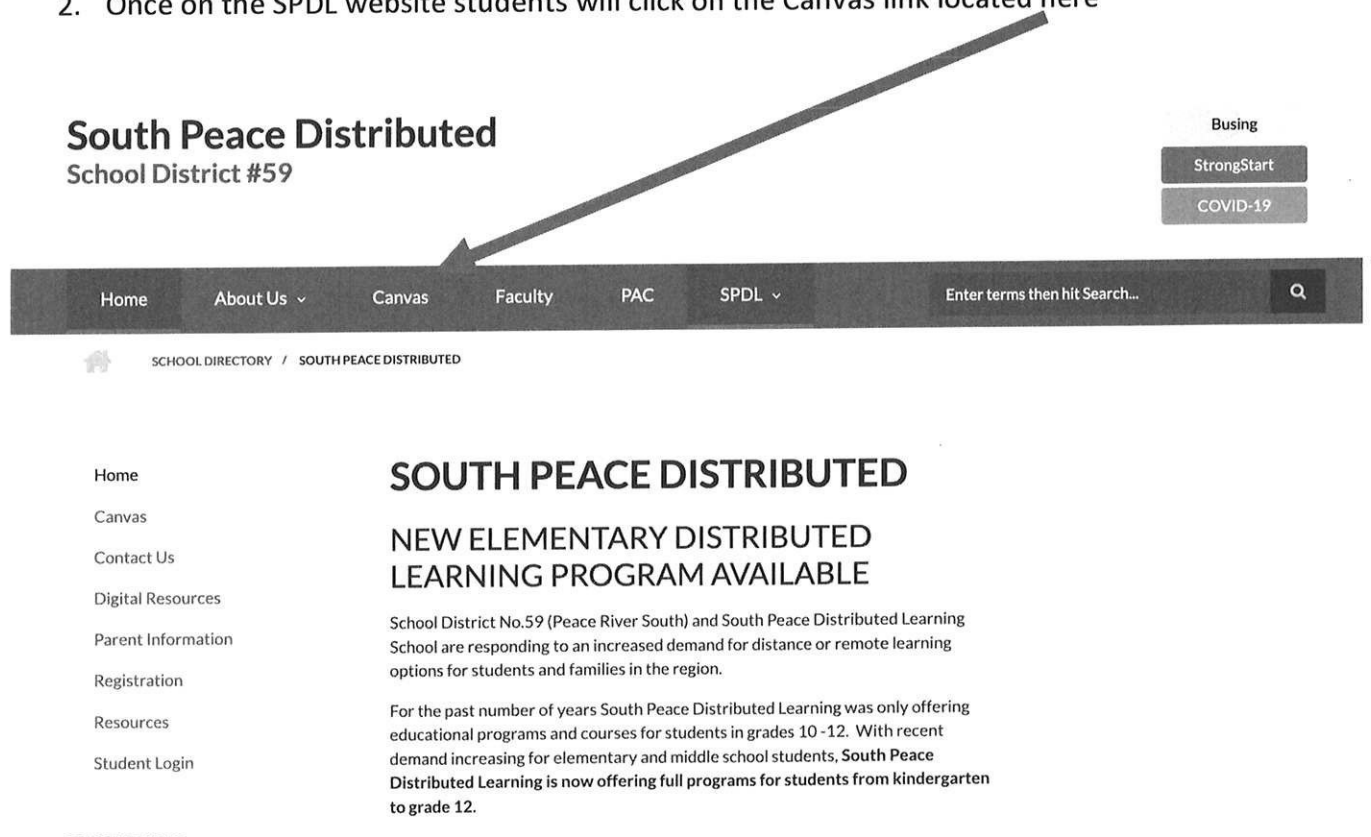
Canvas is the Learning Management System (LMS) used by South Peace Distributed Learning (SPDL) to manage course and student data. Canvas is cloud based and is available through any device. There is also a free app available on for either Apple or Android devices.

### Logging into Canvas on a Computer

1. Canvas can be accessed through the SPDL website found at this link.

<https://www.sd59.bc.ca/schools/south-peace-distributed>

2. Once on the SPDL website students will click on the Canvas link located here



The screenshot shows the website header for South Peace Distributed Learning. The main heading is "South Peace Distributed School District #59". To the right are buttons for "Busing", "StrongStart", and "COVID-19". The navigation menu includes "Home", "About Us", "Canvas", "Faculty", "PAC", and "SPDL". A search bar is located on the right side of the menu. Below the menu, the page content includes a sidebar with links like "Home", "Canvas", "Contact Us", etc., and a main content area with the heading "SOUTH PEACE DISTRIBUTED NEW ELEMENTARY DISTRIBUTED LEARNING PROGRAM AVAILABLE". An arrow points from the "Canvas" link in the navigation menu to the "Canvas" link in the sidebar.

**South Peace Distributed**  
School District #59

Busing  
StrongStart  
COVID-19

Home About Us Canvas Faculty PAC SPDL Enter terms then hit Search...

SCHOOL DIRECTORY / SOUTH PEACE DISTRIBUTED

Home  
Canvas  
Contact Us  
Digital Resources  
Parent Information  
Registration  
Resources  
Student Login

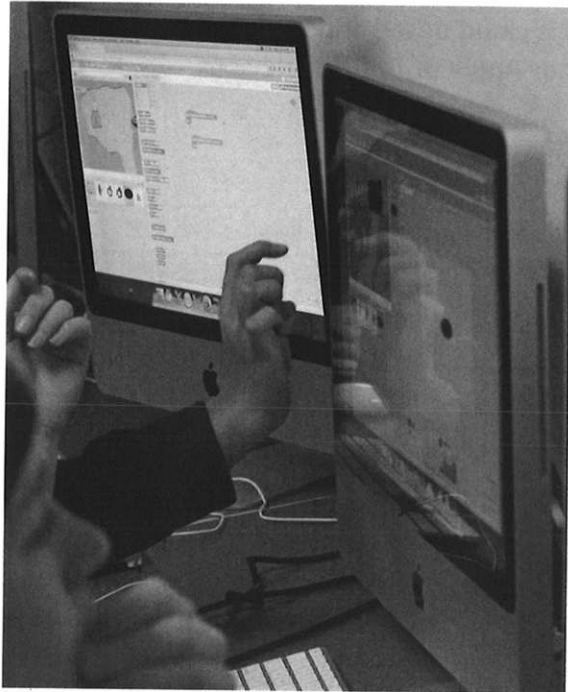
## SOUTH PEACE DISTRIBUTED

### NEW ELEMENTARY DISTRIBUTED LEARNING PROGRAM AVAILABLE

School District No.59 (Peace River South) and South Peace Distributed Learning School are responding to an increased demand for distance or remote learning options for students and families in the region.

For the past number of years South Peace Distributed Learning was only offering educational programs and courses for students in grades 10 -12. With recent demand increasing for elementary and middle school students, **South Peace Distributed Learning is now offering full programs for students from kindergarten to grade 12.**

3. Once the student clicks on the Canvas link they will be redirected to our district login page



*School District 59  
Peace River South*

Please use your SD59 Username or Email Address to login

Sign in

4. Students will need to enter their username and password to gain access. If your child has accessed a computer in their regular school they may know this information.

#### **Username**

- Your child's student number
- Usually a 6 or 7 digit number
- You can contact your child's teacher to find this out if you don't know
- An "s" needs to be added to the front of the student number

#### **Example:**

If their student number is **999888** your child's username is **s999888**

#### **Password**

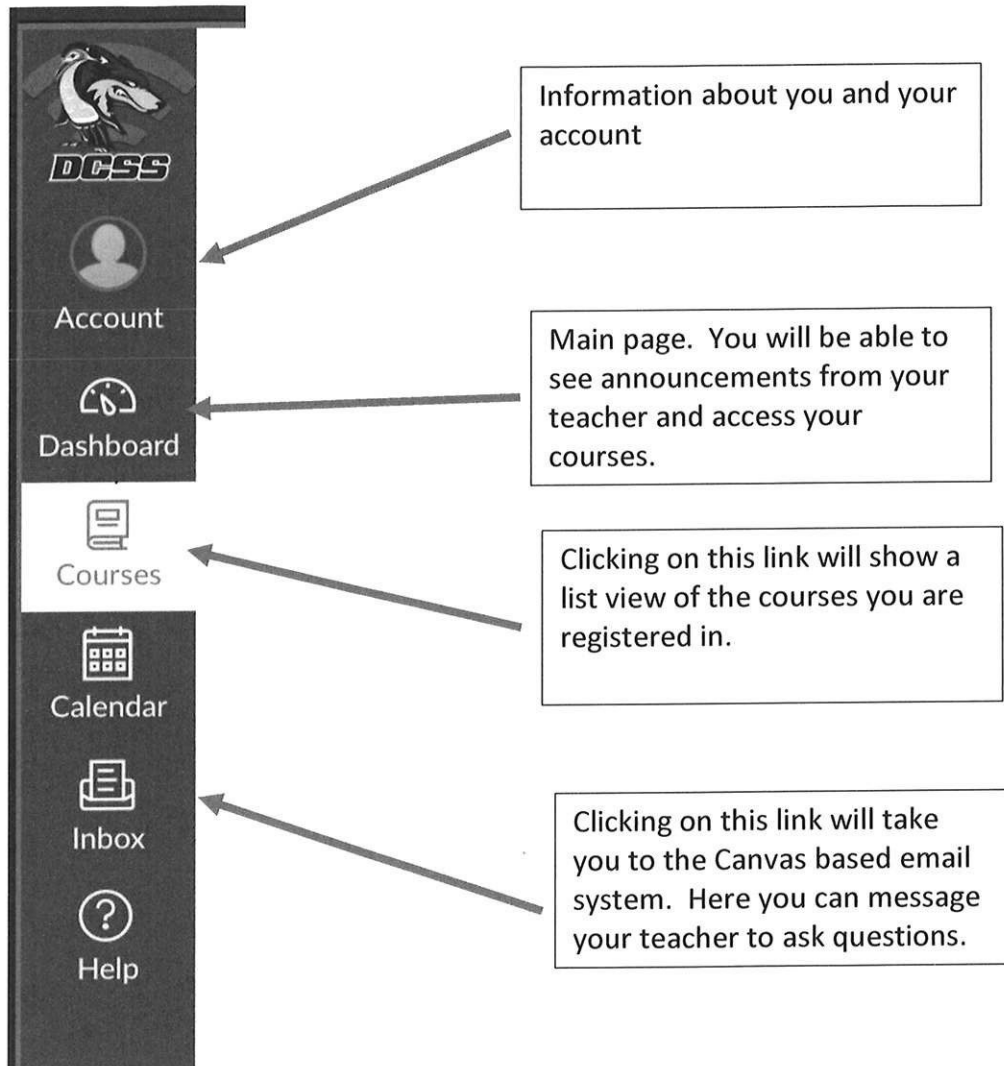
- Passwords are your child's birthday
- Format is important and the dashes are needed
- Format is dd-mmm-yyyy
- Three letter abbreviations are used for the month
  - o Jan, Feb, Mar, Apr, May, Jun, Jul, Aug, Sep, Oct, Nov, Dec

#### **Example:**

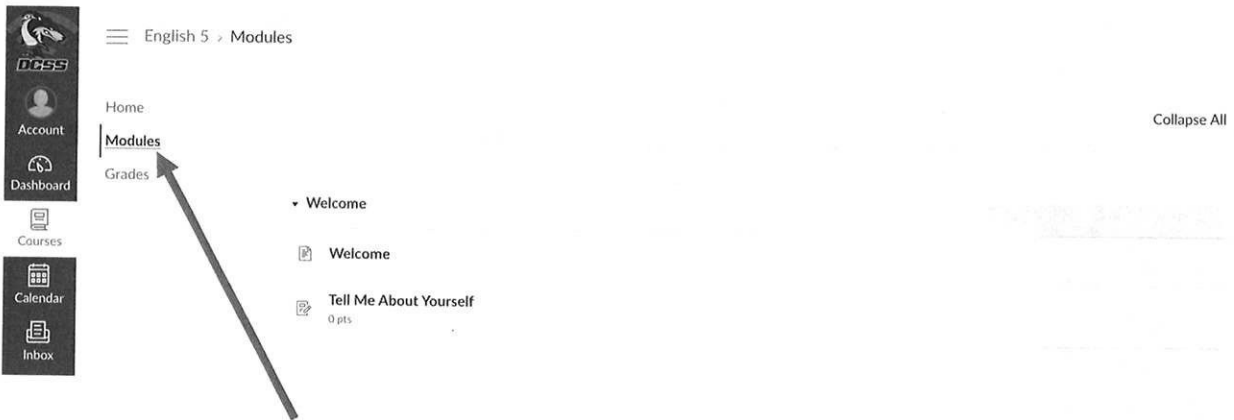
Student's birthdate is **December 25, 1900** then their password is **25-dec-1900**

## Navigating in Canvas

- Once you gain access to Canvas for the first time you will be prompted to accept the terms and conditions.
- Once that step is completed then you will see the courses you have been invited to join.
- Click on the course or use the navigation on the left hand side to get to your course.



## Navigating in your courses



Once in a course the Modules link is easiest way to get into the course. It is very important that you read through the course in sequence to ensure you get all the information needed for the assignments you will complete.

If you click on the “Grades” link it will show you your marks on your assignments

The “Home” link will return you to the same view you get when you click on the Modules link

## Learning Guides

For each academic course you take there are learning guides that are at the start of each unit. The learning guide will guide you through various sections in each unit and will have questions for you to answer as you work through the tasks in the course. The learning guides will need to be submitted in each unit.

## Submitting Assignments

Submitting an assignment is as easy as attaching a document to an email. When you need to submit something to your teacher the page will have a blue Submit Assignment box like the one below.

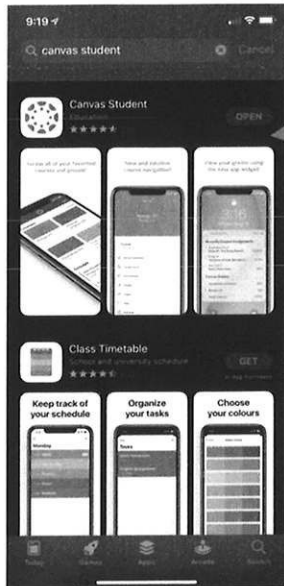
Submit Assignment

## Additional Information

Please follow this link for additional FAQs and guides

<https://community.canvaslms.com/t5/Student-Guide/tkb-p/student>

## Using the Canvas App

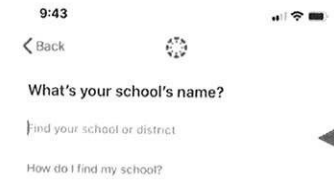


If you are able to download the following app to any mobile device or tablet, students will be able to access their courses through the app.

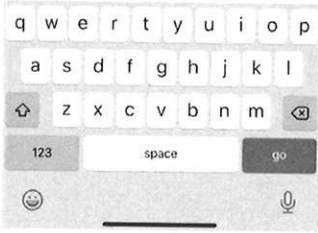
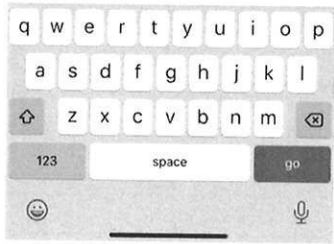
9:43



Once you have downloaded the app click on "Find my school"



To access courses online students will need to enter in [sd59.instructure.com](https://sd59.instructure.com) into the "Find your school or district" box





The final step is to use your SD59 login information to access your courses.

- You will need to accept invitations to courses before they show up on your app.
- Invitations sometimes need to be accepted through a computer
- You can also an internet browser on your phone (Safari, Firefox, etc.) to login to Canvas using the instructions at the top of this guide.
- If you're using a mobile device or tablet the app is a nicer way to navigate the courses.

