

A photograph of a rustic log cabin with a dark roof, situated in a lush green forest. The cabin is built from dark logs and has a small porch area. The surrounding area is filled with tall trees and green grass, with sunlight filtering through the leaves, creating dappled light on the ground.

The Pat O'Reilly Outdoor & Environmental Education Site Update

**SD59 Board of Education Presentation
Wednesday, November 19, 2025.**

The Pat O'Reilly Outdoor & Environmental Education Site Update

Updates and Upgrades:

- Site Use Guide (April 2025)
- Cabin updates (Ongoing)
 - Interior (flooring, bunks, ceilings, etc.)
 - Exterior (decking and accessibility)
- Young Building (October 2025)
 - Wall and Accessible Washroom
- Trail work (Ongoing)
- Road Maintenance (Summer 2025)
- Pat O'Reilly Education Site Flag (2024)

Contracted Services:

- Caretaker
- Outdoor Education Para-educator

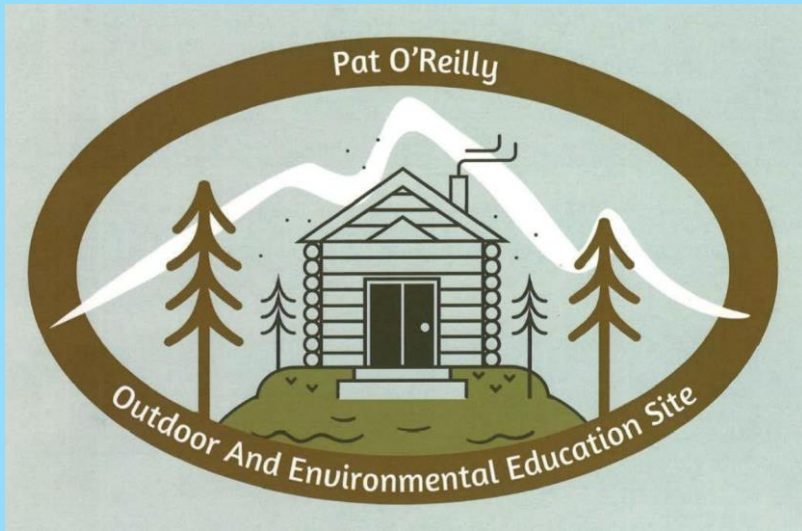
Certifications:

- The Bridge
- The Climbing Wall



Purchases (Over and Above General):

- Side-by-side (Caretaker – 2024)
- Gas Stove (Caretaker Building – 2024)
- Cots (x10) for bookings (2024)
- BBQs (x2) – DPAC (2024)
- Generator (Site - 2025)
- Fire Tables (x3) – Adventure Race (2025)
- Tables (x10) – Young Building (2025)



Updates and Upgrades

The Site Use Guide

Table of Contents

• Pat O'Reilly Outdoor & Environmental Education Site	P. 4
• How to Book Your Class Trip To the Pat O'Reilly Outdoor & Environmental Education Site	P. 7
• How to View The Gwillim Site Booking Calendar	P. 9
• Gwillim Lake Site Booking (AP108) Gwillim Lake Outdoor Education Site Booking Guideline	P. 11
• Preliminary Understandings	P. 15
• Use of Volunteers	P. 17
• Expectations of Volunteers, Trip Coordinators and School Principals/Vice-Principals	P. 19
• Facility Details	
• Young Building	P. 22
• Cabins	P. 23
• Washrooms	P. 25
• Fire Pit	P. 26
• Fire Prevention	P. 27
• Climbing Wall	P. 28
• Gwillim Lake SD 59 Camp Hiking Trails	P. 30
• Emergency Phone	P. 31

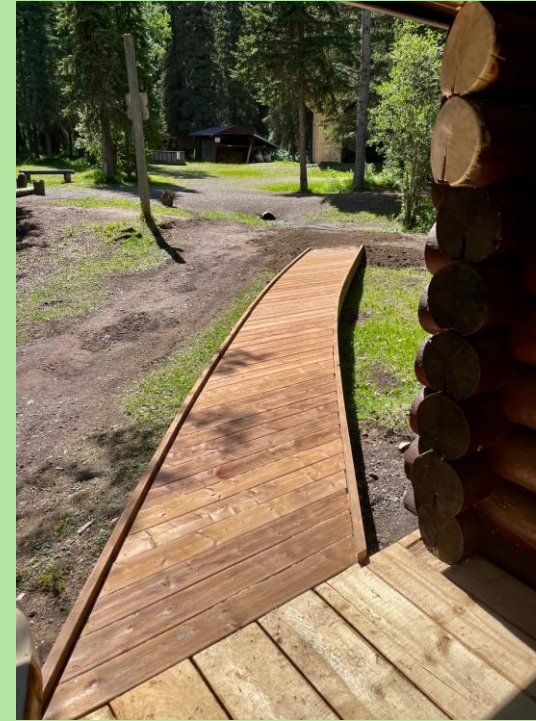
Table of Contents

• Water Safety	P. 32
• Canoeing	P. 33
• Trails	P. 35
• Out Trips	P. 35
• Wildlife	P. 36
• Leave No Trace Camping	P. 37
• Directions to The Camp	P. 38
• Busing	P. 39
• The Pat O'Reilly Legacy	P. 40
• The Pat O'Reilly Outdoor and Environmental Education Site Appendix	P. 43

*All users must attend an information session with Paul Chisholm on an annual basis to be approved to book the site.

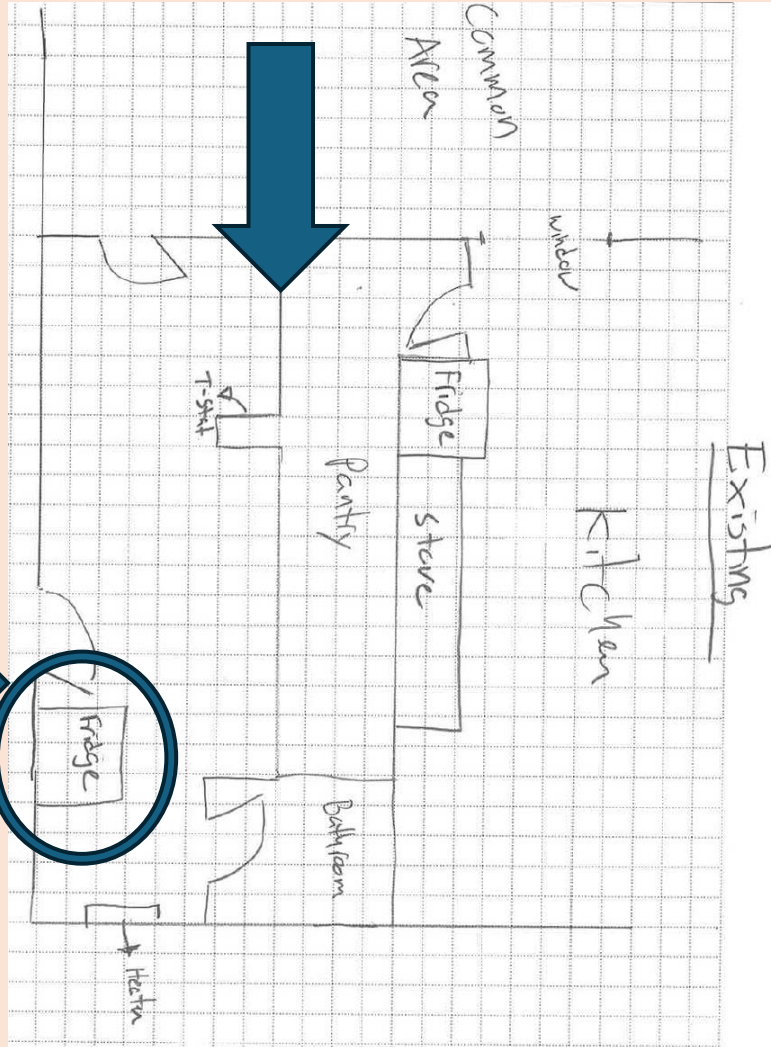
Updates and Upgrades Cabins and Sauna

- Accessibility Ramping
- New Bunks, Flooring, Ceilings and More!



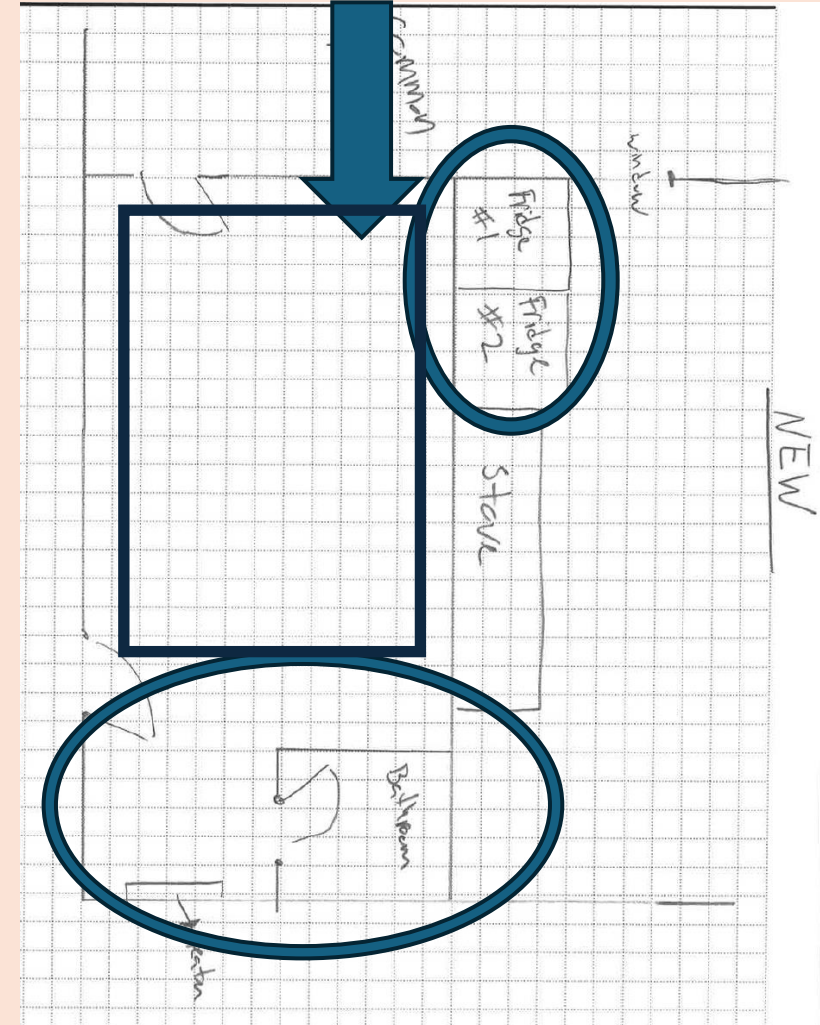
Updates and Upgrades

The Young Building



Creating:

- Space
- Accessibility
- More effective use of space.
- Opens-up opportunity for accessible washroom option.
- Move plumbing; making it less accessible to access by students



Updates and Upgrades

Trails



The Caretaker at the Pat O'Reilly Outdoor and Environmental Education Site has not only been ensuring the trails are well maintained, he spends considerable time widening the trails to allow for increased usage from an accessibility perspective and to allow greater visibility. BC Parks staff visited the site recently and were happy to see the quality of the trails and the level of maintenance that was occurring.

‘Deadfall’ and fallen trees are used at the camp for campfires and wood stoves. Additionally, a lot of deadfall and beetle killed trees are milled for various projects around the camp – decking upgrades in particular.

The school district purchased a side-by-side for the Gwillim site last year. The side-by-side offers the caretaker safe transport of tools and wood through the bush and often becomes the equivalent of another set of hands!

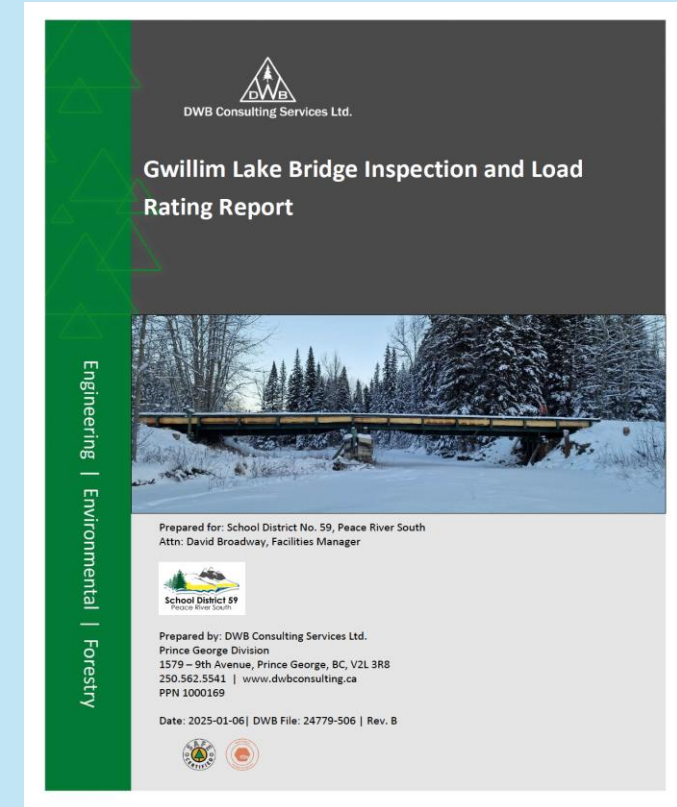
Upgrades and Updates

The Bridge

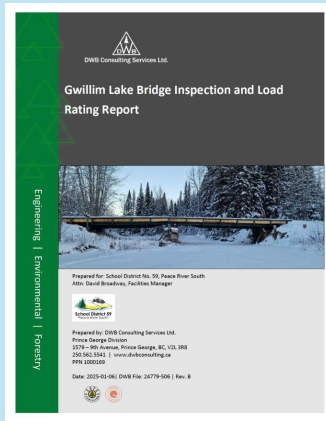


Upgrades and Updates

The Bridge



Gwillim Lake Bridge Inspection and Load Rating Report
Page 5: "... the steel structure has been assessed to possess a load-carrying capacity equivalent to an L-60 load configuration (54 tonnes)."



Upgrades and Updates

The Bridge 'Certified'



Page 5: “The gross vehicle weight rating (GVW) of school buses varies based on their classification, typically ranging from 14,500 pounds (6,577 kg) for smaller models to 21,500 pounds (9,752 kg) for larger ones. These weight ratings fall significantly below the capacity of the L-60 bridge-rated vehicle, which has a GVW of 54,430 kg.”

Page 5: “Additionally, it is recommended that the following maintenance items are completed before industrial use of the crossing:

- Replace the wear deck (Figure 1).
- Install delineators and approach barriers (Figure 2).
- Replace timbers in high chain upstream wingwall (Figure 7).

This bridge is a ‘Railcar’ bridge. Historically speaking, railcar bridges were intended to be temporary structures. As a result, it was also recommended that we continue to complete periodic inspections and maintain our regular (in-house) maintenance.

Upgrades and Updates

The Climbing Wall



Certification: High Performance Climbing Walls (hpcw: www.climbingwalls.net)

Page 4: “Based on the institutional operation , expected usage rates, exterior use/location, and age of the structure; we recommend that an engineering review of the climbing wall is performed annually by a qualified engineer...”

Page 4: “Based on our review and the fulfillment of the above recommendations, we are of the professional opinion that the climbing wall meets acceptable standards and is suitable for continued use in rock climbing programming...”

Additional Updates / Purchases

Financial Support for Gwillim:

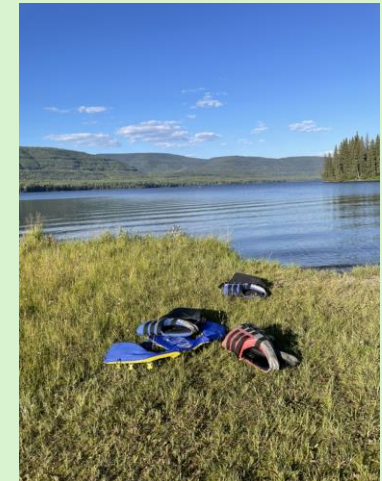
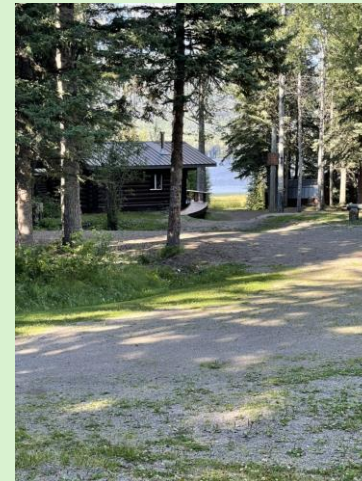
- **School District funds.**
- **Meikle Wind Energy Limited**
 - “Meikle Wind Energy Limited Partnership is committed to helping build strong and vibrant communities in the region surrounding the Meikle Wind project which is located near Tumbler Ridge. Acting on this commitment, Meikle Wind is please to confirm a pledge of financial support to the Peace River South School District #59 to be used for the Par O'Reilly Outdoor & Environment Studies Centre...”
- **Adventure Race donors** – BBQ pits (for times when campfires can not be used due to dry conditions - legacy)
- **DPAC Purchase** - BBQ's, covers and Propane Tanks - Requested support for the Adventure Race 2024 (legacy purchase)
- **French Camp Rental** – Annual rental revenue is used to support site needs.



Who Is Using the Site?

Pat O'Reilly Outdoor & Environmental Education Site Bookings

- | | | | |
|-------------|---------------------------|--------------|-------------------------|
| • May 1-2 | Don't Titus Montessori | • June 2-4 | McLeod Elementary |
| • May 6-7 | Little Prairie Elementary | • June 4-5 | Don Titus Montessori |
| • May 7-9 | McLeod Elementary | • June 9-11 | Canalta Elementary |
| • May 12-14 | Ecole Frank Ross Elem. | • June 12-13 | Tumbler Ridge Secondary |
| • May 14-16 | DCSS: Central Campus | • June 16-18 | Pouce Coupe Elementary |
| • May 20-21 | Canalta Elementary | • June 23-25 | Devereaux Elementary |
| • May 23-24 | SD59 Adventure Race | | |
| • May 26 | Little Prairie | | |
| • May 27 | Little Prairie | | |
| • May 28-29 | Crescent Park | | |
| • May 29-30 | Crescent Park | | |



Who Is Using the Site?

Pat O'Reilly Outdoor & Environmental Education Site Bookings

- September 8-9 Chetwynd Secondary School
- September 12 Tumbler Ridge Elementary
- September 15-16 Little Prairie Elementary
- September 22-23 Little Prairie Elementary
- September 24-26 Don Titus Elementary
- September 29 Crescent Park

-
- October 1 Tumbler Ridge Secondary
 - October 3 Windrem Elementary
 - October 6-7 Parkland Elementary
 - October 8-10 McLeod Elementary
 - October 20-22 Ecole Frank Ross Elementary
 - October 22-24 Crescent Park Elementary

The Numbers

14 different schools
had 29 unique
bookings bookings
over 77 days of
instruction.